

# MUSE

## ACOUSTIC LUMINAIRE

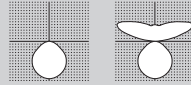


**5 YEAR**  
limited  
led warranty



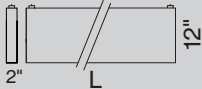
### PERFORMANCE

- Acoustic absorber
- Multiple inset options available
- CRI > 90+
- End to end slim profile illumination
- Absorption class A



### MOUNTING

Pendant



### COMPATIBLE INSETS



MAKE YOUR ROOM STAND OUT



### Physical attributes

#### A RANGE

MUSE MOVE

#### B MOUNTING

Pendant P D T

#### C COLOR

White W H  
Dark gray D G

unless otherwise specified, white and light gray acoustics' standard feeder color is white; dark gray acoustic's standard feeder color is black; all colors come with a standard suspension set and a white J-box cover; please contact customer service for further details

#### D DIRECT LIGHTING

Flush opal lens F O  
No direct light N D

#### E INDIRECT LIGHTING

Batwing uplight B W  
No indirect light N I

#### F CCT

2700 K 2 7 K  
3000 K 3 0 K  
3500 K 3 5 K  
Custom CCT X X K

#### G CRI

CRI > 90 C 9 0

### Electrical attributes

#### H VOLTAGE

Universal U N V

#### I DIMMING

0-10V 1% 0 1 0 V  
Lutron EcoSystem L E S 1  
Quantum, Vive, GRAFIK Eye, HomeWorks  
Custom dimming X X X X  
please call customer service

#### J OUTPUT DIRECT LM/FT

Opal lens flush 0 4 5 0 L F  
No direct light \*  
\*leave blank

#### K OUTPUT INDIRECT LM/FT

Batwing uplight 0 5 5 0 L F  
No direct light \*  
\*leave blank

#### L CIRCUIT / EM

Acoustic baffle only\*  
Single circuit S C  
Power over suspension P S  
only with 0-10V  
\*leave blank

### Dimensional attributes

#### M SHAPE / PATTERN

Linear / straight S T

#### N DIMENSIONS IN FEET

Linear 4' 0 4 FT  
Linear 5' 0 5 FT  
Linear 6' 0 6 FT

# MUSE

## ACOUSTIC TRACK

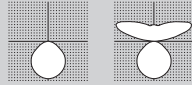


**5 YEAR**  
limited  
led warranty



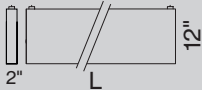
### PERFORMANCE

- Acoustic absorber
- 48V low voltage track
- Multiple inset options available
- CRI > 90+
- Flexible magnetic profile system
- Absorption class A



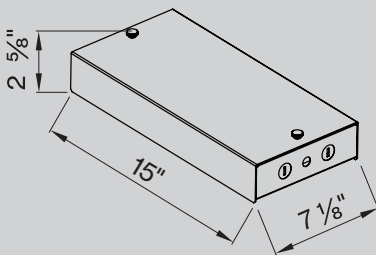
### MOUNTING

Pendant

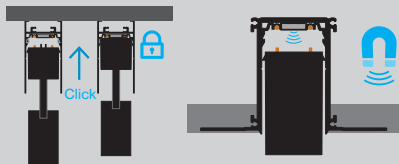


### REMOTE POWER SUPPLY DIMENSIONS

Integral 100 W 48 V DC power supply



### MAGNETIC ATTACHMENT



### Physical attributes

<b>A RANGE</b>	MUSE	MOVE
<b>B MOUNTING</b>	Pendant	PDT
<b>C COLOR</b>	White	WH
	Dark gray	DG

unless otherwise specified, white and light gray acoustics' standard feeder color is white; dark gray acoustic's standard feeder color is black; all colors come with a standard suspension set and a white J-box cover; please contact customer service for further details

### Electrical attributes

<b>H VOLTAGE</b>	48 V	48 V
	constant voltage track	
<b>I DIMMING</b>	0-10V 1% single control	010V
	0-10V 1% dual control*	DC10
	*two 0-10V dimming outputs	
	dual channel insets needed in combination with dual channel track	
	Individual control DALI	DALI
	Lutron 5% single control	LES1

<b>D DIRECT LIGHTING</b>	MOVE IT track for insets	MI
	No direct light	ND
<b>E INDIRECT LIGHTING</b>	Batwing uplight	BW
	No indirect light	NI
<b>F CCT</b>	2700 K	27K
	3000 K	30K
	3500 K	35K
	Custom CCT	XXK
<b>G CRI</b>	CRI > 90	C90

<b>J OUTPUT DIRECT LM/FT</b>	Direct light determined by insets	*
	*leave blank	
<b>K OUTPUT INDIRECT LM/FT</b>	Batwing uplight	0550LF
	No direct light	*
	*leave blank	
<b>L CIRCUIT / EM</b>	Acoustic baffle only*	
	Single circuit	SC
	Power over suspension	PS
	only with 0-10V single channel	
	power over suspension includes remote power supply	
	*leave blank	

### Dimensional attributes

<b>M SHAPE / PATTERN</b>	Linear / straight	ST
<b>N DIMENSIONS IN FEET</b>	Linear 4'	04FT
	Linear 5'	05FT
	Linear 6'	06FT

# MOVE IT 1.2

## SPOT INSETS - JUST 32 & 45



**5 YEAR**  
limited  
led warranty



### PERFORMANCE

- JUST 32 adjustable beam angle 17° - 43°
- Up to 700 lm output
- Magnetic inset attachment
- CRI > 90
- Safety catch locking
- Honeycomb louver accessories



### INSET TYPE

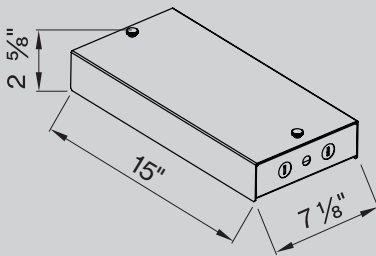
JUST 32 FOCUS

JUST 45



### 48V POWER SUPPLY

Integral 100 W 48 V DC power supply



### ADJUSTABLE BEAM ANGLES

JUST 32 beam angle 17° - 43°



### Physical attributes

#### A RANGE

MOVE IT inset      MOVE I N S

#### B INSET TYPE

JUST 32 FOCUS	J U S T 3 2
17° - 43° beam angle	
JUST 45	J U S T 4 5
23° beam angle	

#### C COLOR

White	W H
Black	B L

#### D CCT

2700 K	2 7 0 0 K
3000 K	3 0 0 0 K
3500 K	3 5 0 0 K

#### E CRI

CRI > 90      C 9 0

### Electrical attributes

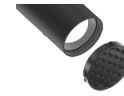
#### G DIMMING

0-10V 1% single control	0 1 0 V
0-10V 1% dual control*	D C 1 0
*two 0-10V dimming outputs	
dual channel insets needed in combination with dual channel track	
Individual control DALI	D A L I
Lutron 5% single control	L E S 1

#### H OUTPUT LM

400 lm / 9 W	0 4 0 0 L M
JUST 32	
700 lm / 11 W	0 7 0 0 L M
JUST 45	

### Accessories



#### HONEYCOMB LOUVER

max. 1 piece / lamp

TYPE	CODE
JUST 32 FOCUS	N 0 7 - 1 9 6 5 1 6 8
JUST 45	N 0 7 - 1 9 6 5 1 8 8
JUST 55	N 0 7 - 1 9 6 5 1 9 8

for other filters, please contact customer service

# MUSE

## SPOT INSETS - JUST 55



**5 YEAR**  
limited  
led warranty



### PERFORMANCE

- Adjustable beam angle 14°, 23°, or 36°
- Magnetic inset attachment
- CRI > 90
- Safety catch locking
- Up to 1900 lm output
- Honeycomb louver available



### INSET TYPE

JUST 55

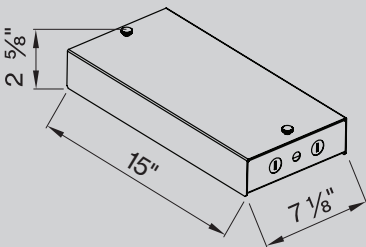


JUST 55

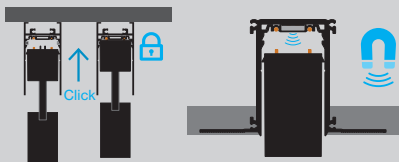


### 48V POWER SUPPLY

Integral 48 V DC available up to 100 W



### MAGNETIC ATTACHMENT



### Physical attributes

#### A RANGE

MOVE IT inset      MOVE I NS

#### B INSET TYPE

JUST 55      JUST 5 5  
14°, 23° or 36° beam angle

#### C COLOR

White      WH  
Black      BL

#### D CCT

2700 K      2 7 0 0 K  
3000 K      3 0 0 0 K  
3500 K      3 5 0 0 K

#### E CRI

CRI > 90      C 9 0

### Electrical attributes

#### F LIGHT DISTRIBUTION

14° spot	S P
23° medium	M D
36° flood	F L

#### G DIMMING

0-10V 1% single control	0 1 0 V
0-10V 1% dual control*	D C 1 0

\*two 0-10V dimming outputs

dual channel insets needed in combination with dual channel track

Individual control DALI	D A L I
Lutron 5% single control	L E S 1

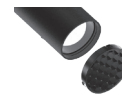
wiring diagram is on power supply page

#### H OUTPUT LM

700 lm / 11 W	0 7 0 0 L M
1100 lm / 15 W*	1 1 0 0 L M
1900 lm / 28 W*	1 9 0 0 L M

\*0-10 V dual channel only

### Accessories



#### HONEYCOMB LOUVER

max. 1 piece / lamp

#### TYPE

#### CODE

JUST 32 FOCUS	N 0 7 - 1 9 6 5 1 6 8
JUST 45	N 0 7 - 1 9 6 5 1 8 8
JUST 55	N 0 7 - 1 9 6 5 1 9 8

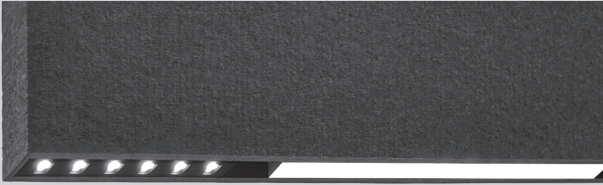
for other filters, please contact customer service

# MOVE IT 1.2

## INSETS - MULTI SPOT



**5 YEAR**  
limited  
led warranty



### Physical attributes

#### A RANGE

MOVE IT inset      MOVE I N S

#### B INSET TYPE

31° multi spot      1 . 2 M U L T I

#### C CCT

2700 K	2 7 0 0 K
3000 K	3 0 0 0 K
3500 K	3 5 0 0 K

#### D CRI

CRI > 90      C 9 0

### Electrical attributes

#### E DIMMING

0-10V 1% single control	0 1 0 V
0-10V 1% dual control*	D C 1 0
*two 0-10V dimming outputs	
dual channel insets needed in combination with dual channel track	
Lutron 5% single control	L E S 1

#### F OUTPUT LM/FT

480 lm/ft	0 4 8 0 L F
31° multi spot	

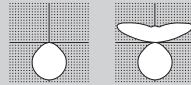
### Electrical attributes

#### G DIMENSIONS IN FEET

1 foot	7.2 W	1 F T
2 feet	11 W	2 F T
line control only		

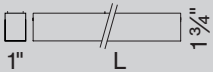
### PERFORMANCE

- Low glare
- Magnetic inset attachment
- CRI > 90
- Quiet illumination high output



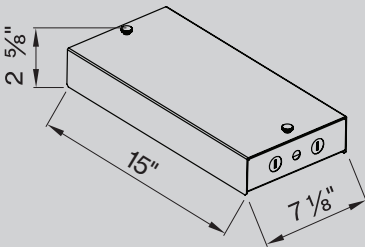
### INSET TYPE

Multispot

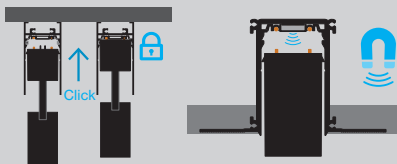


### 48V POWER SUPPLY

Integral 100 W 48V DC power supply



### MAGNETIC ATTACHMENT

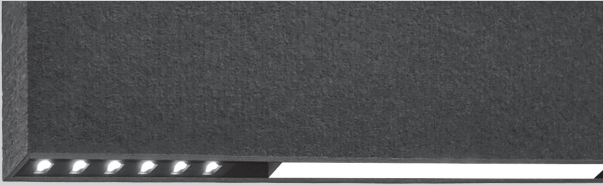


# MOVE IT 1.2

## INSETS - LINEAR

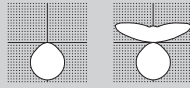


**5 YEAR**  
limited  
led warranty



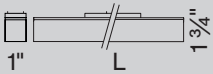
### PERFORMANCE

- Low glare
- Magnetic inset attachment
- CRI > 90
- Quiet illumination high output



### INSET TYPE

Opal

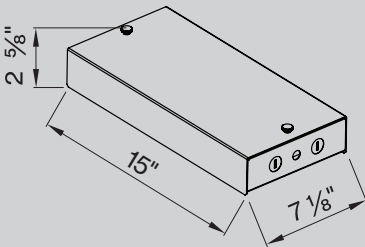


Wallwash

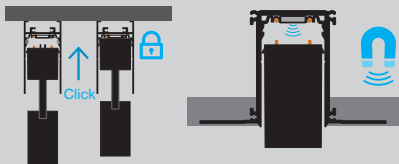


### 48V POWER SUPPLY

Integral 48 V DC available up to 100 W



### MAGNETIC ATTACHMENT



### Physical attributes

#### A RANGE

MOVE IT inset      MOVE I NS

#### B INSET TYPE

Opal flush      1 . 2 O P A L F  
Wallwasher      1 . 2 W A L L W

#### C CCT

2700 K      2 7 0 0 K  
3000 K      3 0 0 0 K  
3500 K      3 5 0 0 K

#### D CRI

CRI > 90      C 9 0

### Electrical attributes

#### E DIMMING

0-10V 1% single control      0 1 0 V  
0-10V 1% dual control\*      D C 1 0

\*two 0-10V dimming outputs

dual channel insets needed in combination with dual channel track

Individual control DALI      D A L I

Lutron 5% single control      L E S 1

wiring diagram is on power supply page

#### F OUTPUT LM/FT

450 lm/ft      0 4 5 0 L F

Opal flush

350 lm/ft      0 3 5 0 L F

Wallwasher

### Electrical attributes

#### G DIMENSIONS IN FEET

1 foot      6 W      1 F T

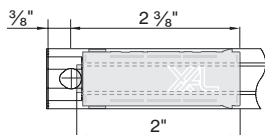
2 feet      11 W      2 F T

4 feet      22 W      4 F T

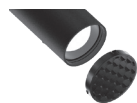
8 feet      44 W      8 F T

opal flush only

**Power feeder location**



**Accessories**



**HONEYCOMB LOUVER** max. 1 piece / lamp

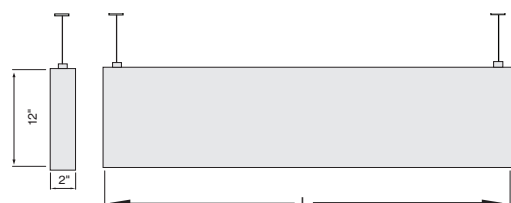
TYPE	CODE
JUST 32 FOCUS	N 0 7 - 1 9 6 5 1 6 8
JUST 45	N 0 7 - 1 9 6 5 1 8 8
JUST 55	N 0 7 - 1 9 6 5 1 9 8

for other filters, please contact customer service

**BLIND COVER** (field cuttable)

LENGTH FT / INCH	COLOR	CODE
1 1/8"		
4'	black	N 5 0 - 4 0 0 4 0 0 8
8'	black	N 5 0 - 4 0 0 8 0 0 8

**EXTERIOR DIMENSIONS**

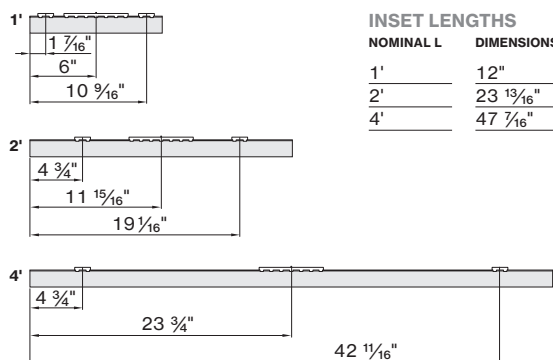


**EXTERIOR LENGTHS**

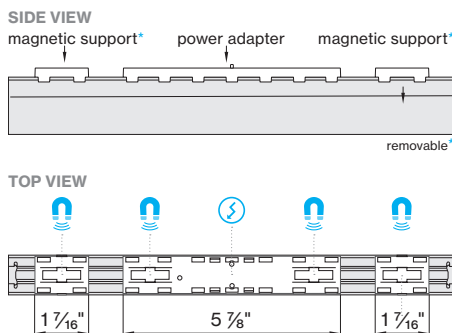
NOMINAL L	DIMENSIONS
4'	48 1/8"
5'	61 1/8"
6'	73 3/16"

**CHANNEL DIMENSIONS**

**Inset distances**

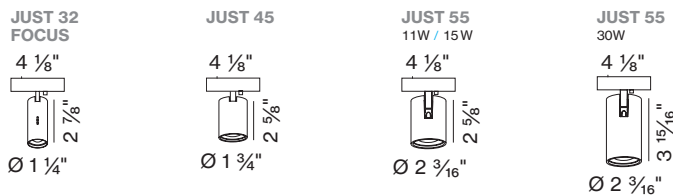


NOMINAL L	DIMENSIONS
1'	12"
2'	23 13/16"
4'	47 1/16"



**INSET DIMENSIONS**

**Spot insets**



NOMINAL L	DIMENSIONS
1'	12"
2'	23 13/16"
4'	47 1/16"

**Linear insets**

